

Pencil Grades

H pencil - hard – hard and lighter lines

B pencil - blackness – soft and darker lines

Creating Space

Overlapping – putting shapes in front of one another

Height – how far up the piece of art a shape is

Size – how big a shape is compared to other shapes

Drawing techniques



Feathering



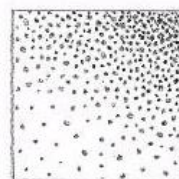
Cross-Hatching



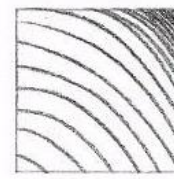
Solid Shading



Hatching



Stippling



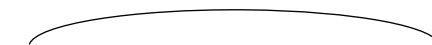
Contouring

Line types

Straight



Curved



Hard – solid and dark

Soft – gentle and light

Thick – sides are far apart.

Thin – sides are close together.

Theme – the big idea or message of the art.

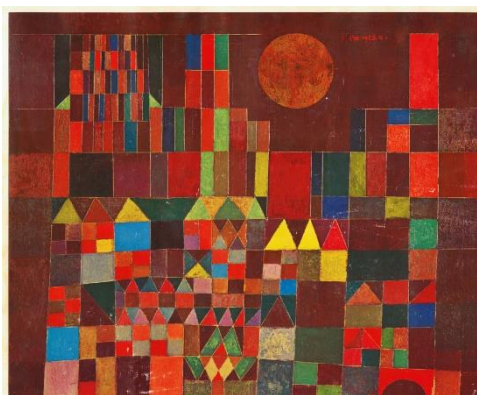
Content – what is included in the art.

Process – how a piece of art was put together.



Paul Klee

Castle and Sun



Senecio

Combine simple shapes to create an overall object.

Elements of Art

Colour – how we describe the way our eyes see light.

Line – a mark made on a surface that joins different points.

Shape – a 2D area.

Space – the area around or inside a shape.