



We are Artists...

Drawing

We are curious, we are unique, we are together, we are Whiteshill!

Pencil Grades

H pencil - hard – hard and lighter lines

B pencil - blackness – soft and darker lines

Creating Space

Overlapping – putting shapes in front of one another

Height – how far up the piece of art a shape is

Size – how big a shape is compared to other shapes

Drawing techniques



Feathering



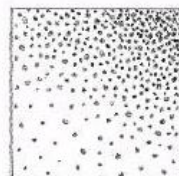
Cross-Hatching



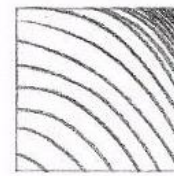
Solid Shading



Hatching



Stippling



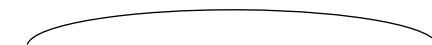
Contouring

Line types

Straight



Curved



Hard – solid and dark

Soft – gentle and light

Thick – sides are far apart.

Thin – sides are close together.

Theme – the big idea or message of the art.

Content – what is included in the art.

Process – how a piece of art was put together.

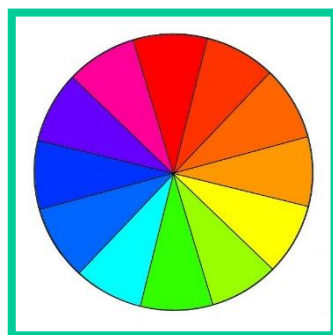
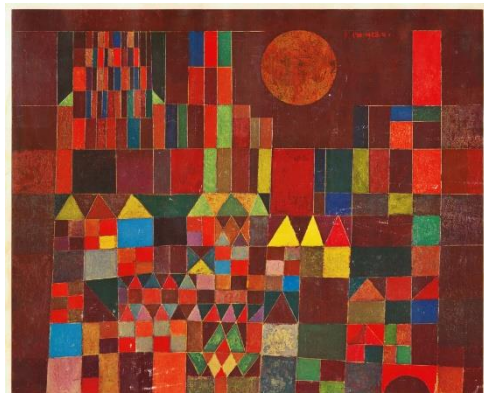


Paul Klee

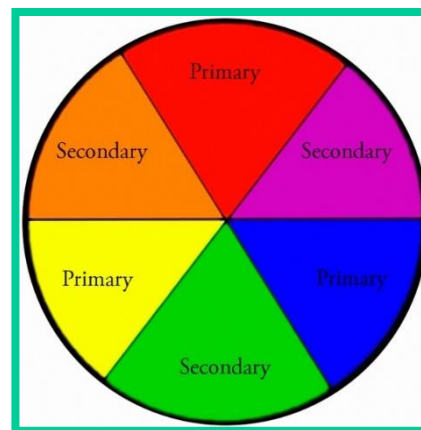


Senecio

Castle and Sun



Contrasting colours are opposite on the colour wheel.



Combine simple shapes to create an overall object.

Elements of Art

Colour – how we describe the way our eyes see light.

Line – a mark made on a surface that joins different points.

Shape – a 2D area.

Space – the area around or inside a shape.