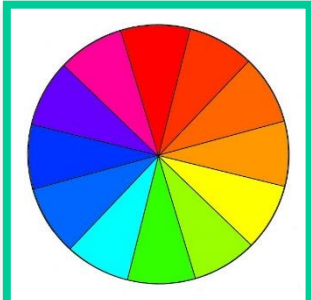
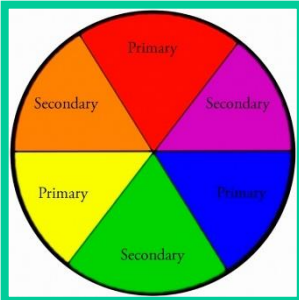




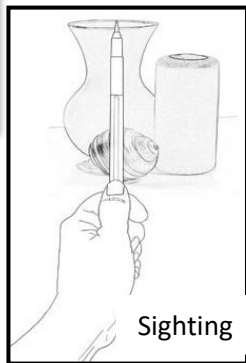
We are Artists...

Painting

We are curious, we are unique, we are together, we are Whiteshill!



Contrasting colours are opposite on the colour wheel.



Sighting

Vocabulary

Contrasting – opposite elements are arranged together e.g. black and white, thick and thin, smooth and rough.

Landscape – art showing natural and man-made scenery.

Refining – make minor changes over and over to improve something.

Realistic – accurate to real-life.

Linear perspective – The further away an object is, the smaller it appears.

Aerial perspective - The farther away an object is, the weaker their colour and detail appear.

Elements of Art

Colour – how we describe the way our eyes see light.

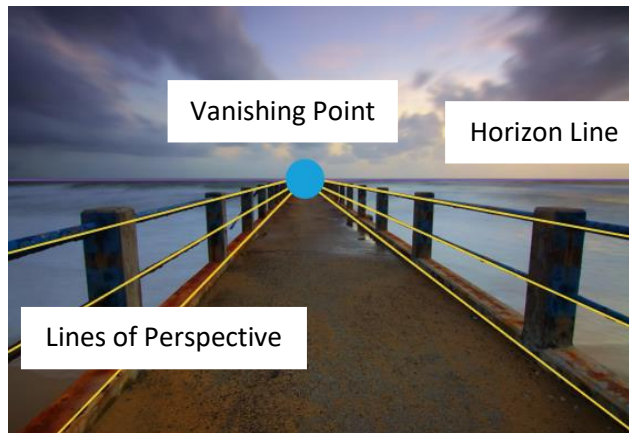
Pattern – a repeated, decorative design.

Line – a mark made on a surface that joins different points.

Shape – a 2D area.

Space – the area around the objects in a piece of art.

Texture – what something feels like in real life e.g. think brushstrokes on a painting, rough or smooth clay.



Vanishing Point

Horizon Line

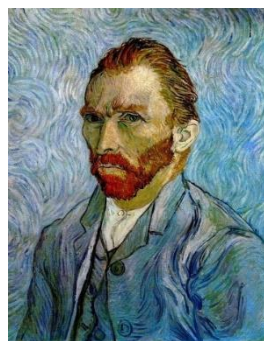
Lines of Perspective

Theme – the big idea or message of the art.

Content – what is included in the art.

Process – how a piece of art was put together.

Impact – a strong effect on something.



Vincent Van Gogh

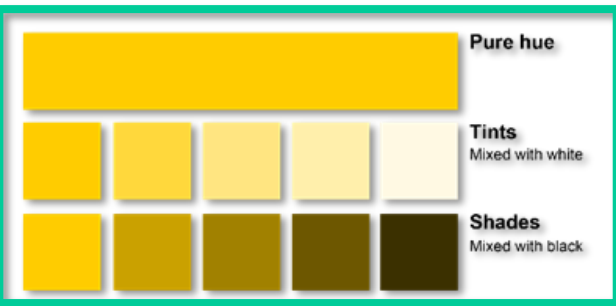
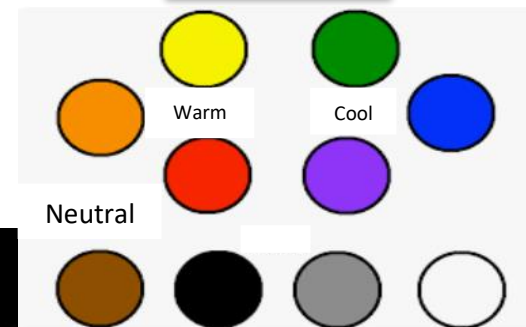


Coming from the Mill

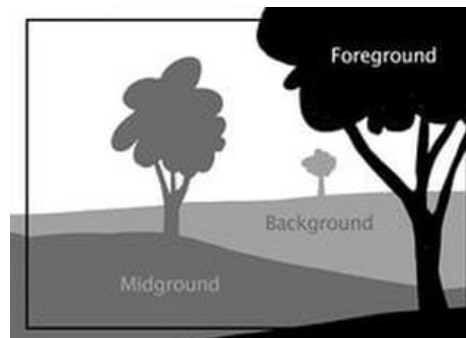


LS Lowry

Colour Families



The Starry Night



Combine simple shapes to create an overall object.