

We are Artists...

Painting

We are curious, we are unique, we are together, we are Whiteshill!

Combine simple shapes to create an overall object.

Contrasting colours are opposite on the colour wheel.

Vocabulary

Contrasting – opposite elements are arranged together e.g. black and white, thick and thin, smooth and rough.

Landscape – art showing natural and man-made scenery.

Refining – make minor changes over and over to improve something.

Realistic – accurate to real-life.

Linear perspective – The further away an object is, the smaller it appears.

Aerial perspective - The farther away an object is, the weaker their colour and detail appear.

Elements of Art

Colour – how we describe the way our eyes see light.

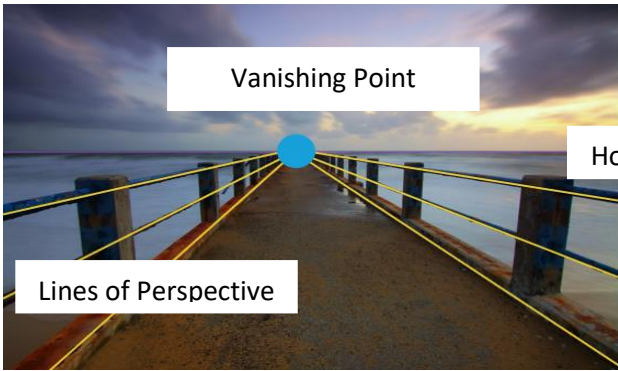
Pattern – a repeated, decorative design.

Line – a mark made on a surface that joins different points.

Shape – a 2D area.

Space – the area around the objects in a piece of art.

Texture – what something feels like in real life e.g. think brushstrokes on a painting, rough or smooth clay.

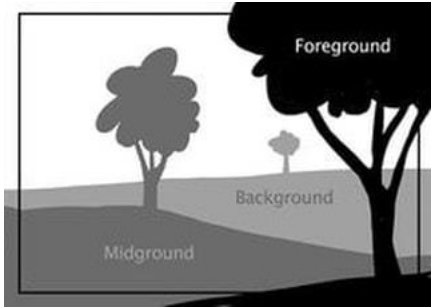


Theme – the big idea or message of the art.

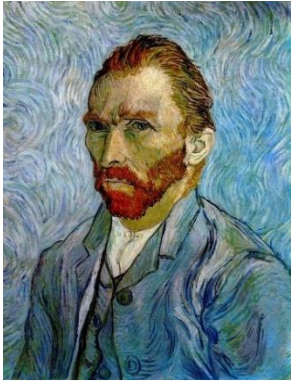
Content – what is included in the art.

Process – how a piece of art was put together.

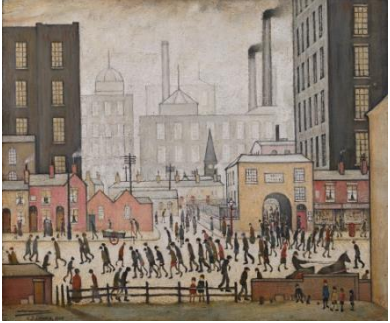
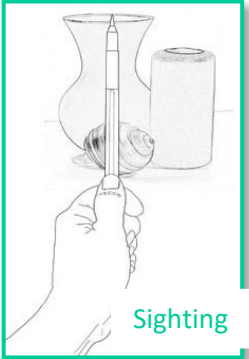
Impact – a strong effect on something.



LS Lowry



Vincent Van Gogh



Coming from the Mill



The Starry Night

