



We are Artists...

Batik

We are curious, we are unique, we are together, we are Whiteshill!

Elements of Art

Colour – how we describe the way our eyes see light.

Pattern - a repeated, decorative design.

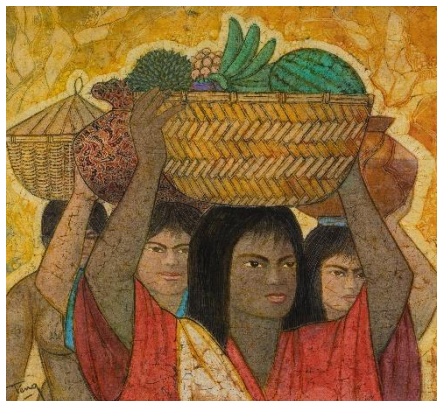
Texture – what something feels like in real life e.g. brushstrokes on a painting, rough or smooth clay.

Line – a mark made on a surface that joins different points.

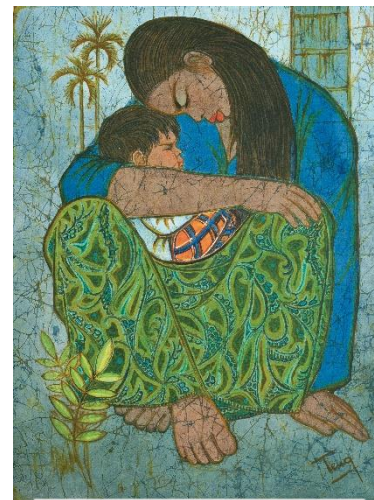
Space – the area around or inside a shape.

Shape – a 2D area.

Form - an element of art which is 3-dimensional and has height, width and depth.



Market Scene



Mother and Child



Chuah Thean Teng

Theme – the big idea or message of the art.

Content – what is included in the art.

Process – how a piece of art was put together.

Impact – a strong effect on something.

Creating Space

Overlapping – putting shapes in front of one another

Height – how far up the piece of art a shape is

Size – how big a shape is compared to other shapes

Positive space – the focus of the art

Negative space – the background of the art

Vocabulary

Refining – make minor changes over and over to improve something.

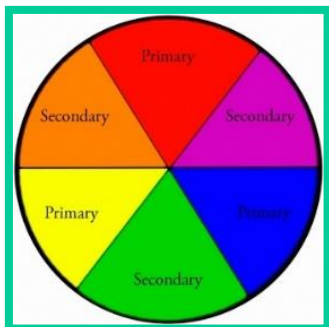
Realistic – accurate to real-life.

Batik - coloured designs on cloth made by dyeing the cloth with ink, using melted wax to create a barrier where the ink is not wanted.

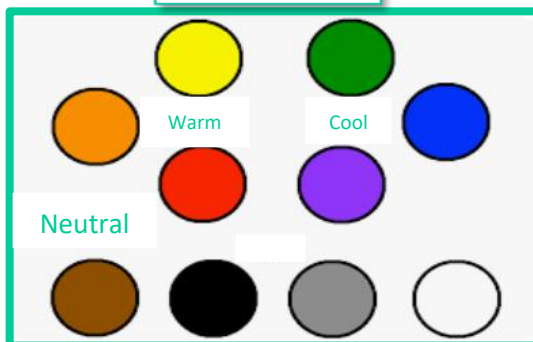
Depth – creating the illusion of 3D on a flat surface.

Combine simple shapes to create an overall object.

Contrasting colours are opposite on the colour wheel.



Colour Families



Contrasting dark and light colours create depth