

## Creating Space

**Size** – how big a shape is compared to other shapes

**Positive space** – the focus of the art



**Negative space** – the background of the art



We are Artists...

Printing

We are curious, we are unique, we are together, we are Whiteshill!

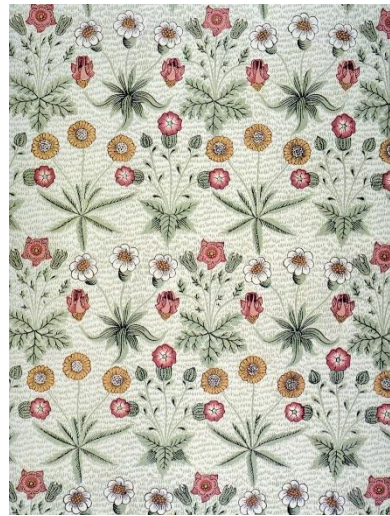
**Theme** – the big idea or message of the art.



**Content** – what is included in the art.



**Process** – how a piece of art was put together.



Daisy



Strawberry Thief



William Morris

## Vocabulary

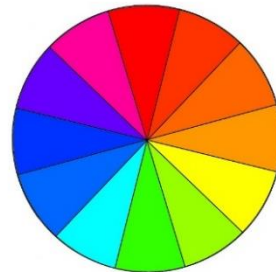
**Contrasting** – opposite elements are arranged together e.g. black and white, thick and thin, smooth and rough.



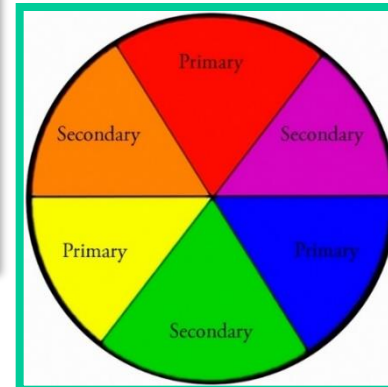
**Repeated** – the same over and over again.



**Printing** – make a copy by covering something in paint and pressing it down on to a surface.



Contrasting colours are opposite on the colour wheel.



## Elements of Art

**Colour** – how we describe the way our eyes see light.

**Shape** – a 2D area.



**Space** – the area around or inside a shape.



**Pattern** – a repeated, decorative design.

